

PRECISION REGULATOR

SHAVO
FIRST NAME IN PNEUMATICS

11-4SNR (G 1/4, G 3/8, G 1/2)

FEATURES

- I Shavo's Regulator unit offers extremely precise control.
- I Unique Valve design and large ratio of diaphragm to valve area affords highly sensitive performance.
- I Specially designed to meet instrumentation requirements.
- I Also available as Filter/Regulator.



PARAMETERS	SPECIFICATIONS		
Pipe Threads	Rc 1/4, 3/8, 1/2 BSP / NPT	Taper (F)	- Standard - Optional
Maximum Inlet Pressure	250 psig (17.5 bar)		
Maximum Operating Temperature (ambient)	80° C (175° F)		
Standard nominal flow rate at 10bar (150 psi). Inlet Pressure 6bar(87 psi) set press. and a drop of 1bar(14.5 psi) from set	55 scfm (26 dm ³ /sec) CV(1.04)		
Regulator Type	Relieving	-	Standard
	Non-Relieving	-	Optional
Pressure Adjustments	Hand wheel	-	Standard
Pressure Adjustment		Spring Range psi(bar)	Gauge Range psi(bar)
Regulated secondary outlet pressure (spring range) and recommended Pressure gauge ranges available in psi)	1	1-10 (0.07 to 0.70)	0-15 (0 to 1.0)
	2	3-30 (0.21 to 2.10)	0-35 (0 to 2.5)
	3	5-50 (0.35 to 3.50)	0-60 (0 to 4.0)
	4	7-70 (0.50 to 5.00)	0-100 (0 to 7.0)
	5	10-100 (0.70 to 7.00)	0-150 (0 to 10.0)
Elastomers	Nitrile (NBR)		-20°C to +80°C
	Low temperature Nitrile (LNBR)		-40°C to +80°C
	EPDM		-35°C to +120°C
	Fluorocarbon(Viton-FKM)		-20°C to +180°C
Gauge size	52mm OD		
Gauge Port size	Rc 1/4		
Gauge connection	Back		
Mounting Bracket	Optional		

Pressure Gauge (scale) : Kg/cm² (PSI) - Standard (For Domestic Market)
Bar (PSI) - Standard (Export)

Note: Pressure gauge will not have the CE, EAC & SIL3 approval.

PRECISION REGULATOR



11-4SNR (G 1/4, G 3/8, G 1/2)

Size	Flow (dm ³ /s)	Range psi	Operation	Model
1/4" BSPT	55 scfm (26 dm ³ /s)	10 - 100 psi 5 - 50 psi 3 - 30 psi	Relieving	11- 4SNR-200-RNKA-EN 11- 4SNR-200-RNEA-EN 11- 4SNR-200-RNCA-EN

Option Selector

Sample Model Number → 1 1 - 4 S N R - 2 0 0 - R G K A - E N - X X X - X X X

Position → 1 2 - 3 4 5 6 - 7 8 9 - 10 11 12 13 - 14 15 - 16 17 18 - 19 20 21

1 2 3 4 5 6

Instrument Regulator with S.S. Trim

7 Port Size

2 = 1/4"
3 = 3/8"
4 = 1/2"

8 9 Options

00 = Std. - Knob Type
50 = Std. - Slotted Screw Type
20 = Panel Mounting - Knob Type
70 = Panel Mounting - Slotted Screw Type

10 Options

R = Relieving
N = Non Relieving

11 Gauge

N = No Gauge
G = With Gauge

12 Secondary Pressure Range

[0] = 0.14-2.0 psi (0.01 - 0.14 bar)
A = 1-10 psi (0.07 - 0.7 bar)
C = 3-30 psi (0.21 - 2.1 bar)
E = 5-50 psi (0.35 - 3.5 bar)
F = 6-60 psi (0.40 - 4.0 bar)
K = 10-100 psi (0.7 - 7.0 bar)

13 Port Thread

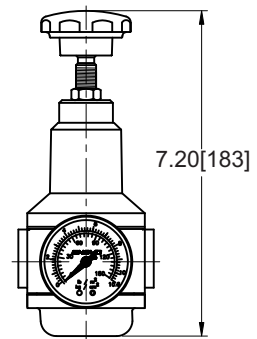
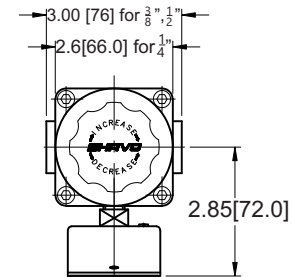
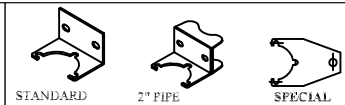
	Main Ports	Gauge Ports
A	NPT	BSPT
B	BSPT	BSPT
G	BSP	BSPT
N	NPT	NPT

14 Elastomer Material

N = Nitrile
[E] = EPDM
[V] = Viton
[L] = Low temperature Nitrile (LNBR)

15 Mounting Bracket

N = No Mounting Bracket
B = Standard Mounting Bracket
P = 2" Pipe Mounting Bracket
S = Customer's spl. Mounting Bracket



11-4SNR

11-4SNR (G 1/4, G 3/8, G 1/2)

16 17 18 Test / Approval

C	0	0	CE
C	0	1	UKCA
C	0	2	CE,UKCA
E	0	0	EAC
E	0	1	EAC, UKCA
S	0	0	SIL3
S	0	1	SIL3, UKCA
G	0	0	CE, EAC
G	0	1	CE, EAC, UKCA
H	0	0	CE, SIL3
H	0	1	CE, SIL3, UKCA
K	0	0	CE, EAC, SIL3
K	0	1	CE, EAC, SIL3, UKCA
X	X	X	Standard Units Without Any Certificatio / Approval
[O]	[0]	[0]	Other Customer Special Requirement if Any

19 20 21 Compliance

X	X	X	Standard Unit Without any Compliance
A	0	1	RoHS 3 Compliance
A	0	2	REACH Compliance
A	0	3	Copper Free (Only Applicable Aluminium Version)
A	0	4	RoHS3, REACH Compliance
A	0	5	RoHS3, REACH, Copper Free (Only Applicable for Aluminium Version)
A	0	6	RoHS3, Copper Free (Only Applicable for Aluminium Version)
A	0	7	REACH, Copper Free (Only Applicable for Aluminium Version)

Note: Option shown in the [] bracket are special, Please contact Sales HQ/Manufacturing.