

SL18 (G 1½, G 2)

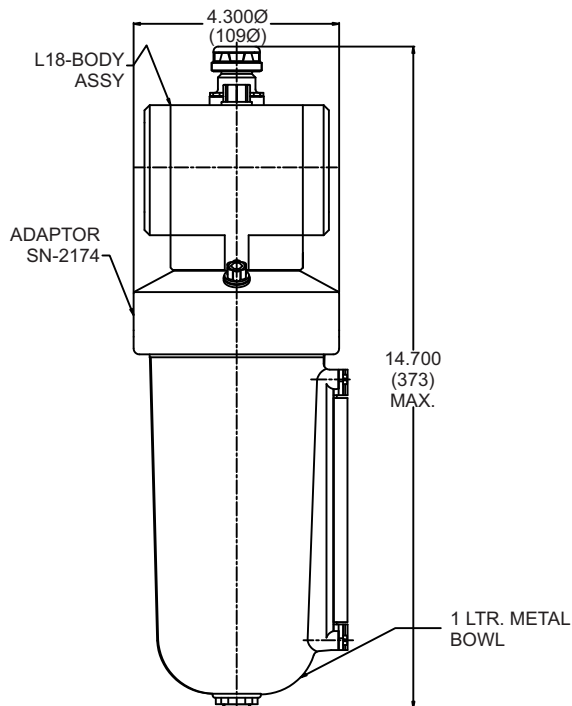
FEATURES

Shavo's very high flow capacity direct ported oil fog lubricator is useful for supply of proportionately lubricated air in large quantities

Ideally suited for header lines



PARAMETERS	SPECIFICATIONS
Pipe Threads	G 1 ½, G 2"
Type	Oil-Mist
Body Material	Aluminium
Reservoir Capacity	1 Litre / 8 Litre / 23 Litre
Maximum Inlet Pressure	250 psi (17.5 bar)
Maximum Operating Temperature (ambient)	80°C
Standard Nominal Flow Rate at 6 bar (87 PSI) supply pressure and 1 bar (14.5 PSI) Pressure drop	800 scfm (378 dm³/sec) CV(15.0)
Minimum reqd flow (at 87 psi inlet)	200 scfm (95 dm³/sec)
Recommended Lubricants	Use any good quality misting type oil rated 50 - 200 SSU (ISO grade 7 - 46) at 38° C(100°F) Use oils which are compatible with the material of construction.



Dimns. in mm	A	B	C
8 Litre Reservoir	460	390	210
23 Litre Reservoir	575	505	310

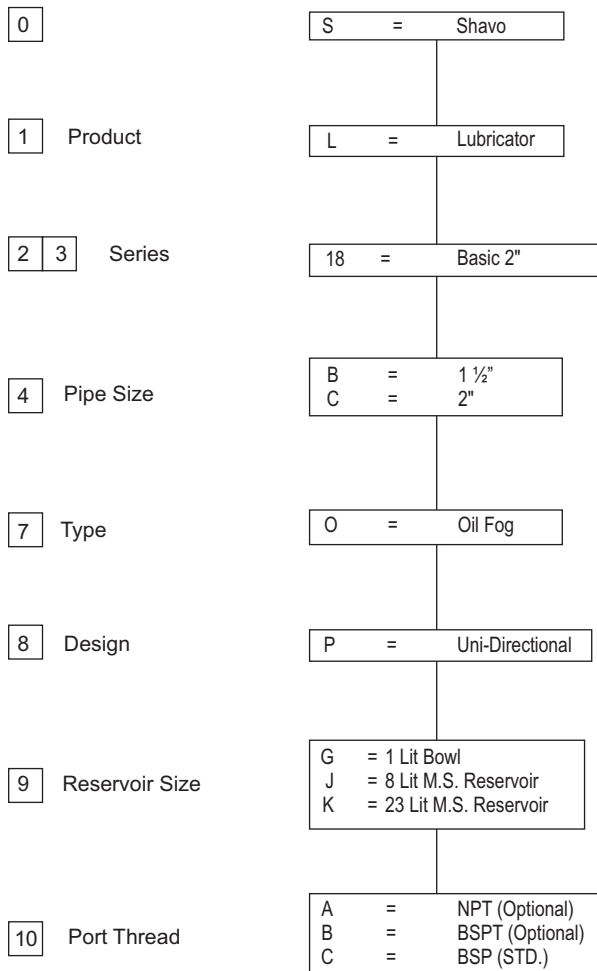
SL18 (G 1½, G 2)

Size	Flow scfm	Minimum Flow	Reservoir Capacity	Model
G 1½	800 scfm (378 dm³/sec)	200 scfm (95 dm³/sec)	8 Litre	SL18-B00-OPJC
G 2	800 scfm (378 dm³/sec)	200 scfm (95 dm³/sec)	8 Litre	SL18-C00-OPJC

Option Selector

Sample Model Number → **S L 1 8 B 0 0 O P J C**

Position → **0 1 2 3 4 5 6 7 8 9 10 11 12**



SL18 (G 1½, G 2)

7 VW SSURYDO

Elastomer

X	=	Standard unit with Nitrile elastomer
[L]	=	Low temp.Nitrile elastomer (LNBR)

RPSOLD F