

## SL27 (G 1/4, G 3/8 )

## Features

- Shavo's foremost oil fog lubricator produces oil particles suspended in the air line as a fine mist, travel along with compressed air for lubricating valves, cylinders and pneumatic tools.
- Very fine control of oil delivery through adjusting screw
- SIL 3 capable as per IEC 61508.
- CE, EAC[CU TR10(equivalent to GOST R&K)] approved.
- Use any good quality misting type oil rated 50-200 SSU (ISO grade 7-46) at 38°C(100°F). Use oils which is compatible with material of construction.
- External Metallic parts meet NACE standard MR 0175.

(\*National Association of Corrosion Engineers MR-0175 defines requirements for sulphide stress cracking resistant materials used in oilwells and other corrosive environments.)



PARAMETERS	SPECIFICATIONS
Fluid	Compressed Air
Pipe Size	1/4", 3/8"
Pipe Threads	NPT - Standard    BSPT. / BSP - Optional
Type	Oil Fog
Material of Construction	STAINLESS STEEL AS PER AISI 316L
Body, Bowl, Dome	SS316L with NACE compliance (MR 0175)
Internal parts	SS 316L
External parts	SS 316L with NACE compliance (MR 0175)
Bowl Capacity	160 ml.
Maximum inlet Pressure	17.5 bar (250 psi)
Max. Operating Temp. (ambient):	80° C (for Nitrile Elastomer)
Standard Nominal Flow Rate at 6 bar (87 psi) supply pressure and 1 bar (14.5 psi) pressure drop.	1/4" - 31 scfm (15 dm³/sec) 3/8" - 44 scfm (21 dm³/sec)
CV Value	1/4" - (0.58) 3/8" - (0.84)
Minimum Flow reqd to start (at 6 bar inlet)	1/4" - 2.5 scfm (1.2 dm³/sec) 3/8" - 3.9 scfm (1.8 dm³/sec)
Recommended Lubricants	Use any good quality misting type oil rated 50-200 SSU(ISO grade 7-46) at 38°C. Use oil which are compatible with the material of construction.
Weight	2.3 Kg.

Size	Flow	Start point (dm³/sec)	Bowl	Bowl Capacity	Model
G 1/4	31 scfm (15 dm³/sec)	2.5 scfm (1.2 dm³/sec)	Metal	160 ml	SL27-2A-00-T
G 3/8	44 scfm (21 dm³/sec)	3.9 scfm (1.8 dm³/sec)	Metal	160 ml	SL27-3A-00-T

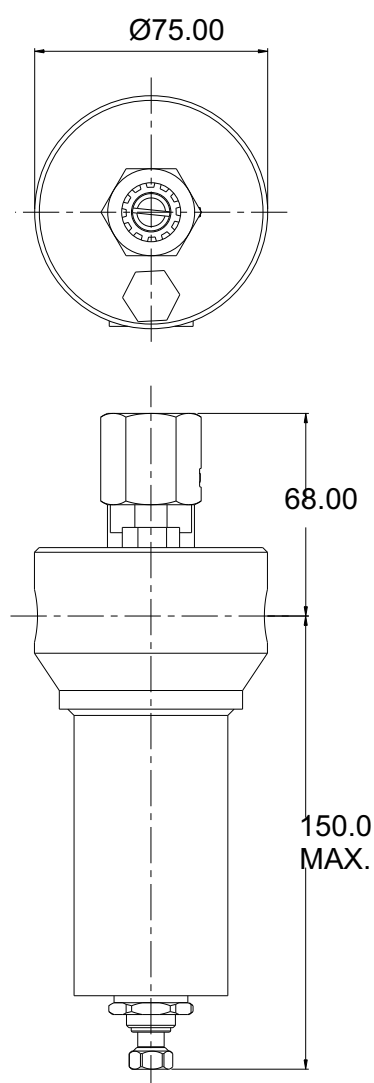
## SL27 (G 1/4, G 3/8)

## Option Selector

Sample Model Number → S L 2 7 C - 2 A - 0 0 - T - X X X - X X X

Position → 0 1 2 3 4 - 5 6 - 7 8 - 9 - 10 11 12 - 13 14 15

0	S	=	Shavo
1	L	=	Lubricator
2 3	27	=	Midi series - SS 316L (MOC)
4	C	=	Oilfog
5	2 3	=	1/4" 3/8"
6	A B G	=	NPT ISO RcTaper (=BSPT) ISO Parallel (=BSP)
7 8	00 [04]	=	Nitrile Elastomers Low Temperature Nitrile (LNBR)
9	T	=	SS 316 Bowl without sight glass



## SL27 (G 1/4, G 3/8)

10 11 12 Test / Approval

C	0	0	CE
C	0	1	UKCA
C	0	2	CE, UKCA
E	0	0	EAC
E	0	1	EAC, UKCA
S	0	0	SIL3
S	0	1	SIL3, UKCA
G	0	0	CE, EAC
G	0	1	CE, EAC, UKCA
H	0	0	CE, SIL3
H	0	1	CE, SIL3, UKCA
K	0	0	CE, EAC, SIL3
K	0	1	CE, EAC, SIL3, UKCA
X	X	X	Standard Units Without Any Certificatios / Approval
[0]	[0]	[0]	Other Customer Special Requirement if Any

13 14 15 Compliance

X	X	X	Standard Unit Without any Compliance
A	0	1	RoHS 3 Compliance
A	0	2	REACH Compliance
A	0	3	Copper Free (Only Applicable Aluminium Version)
A	0	4	RoHS3, REACH Compliance
A	0	5	RoHS3, REACH, Copper Free (Only Applicable for Aluminium Version)
A	0	6	RoHS3, Copper Free (Only Applicable for Aluminium Version)
A	0	7	REACH, Copper Free (Only Applicable for Aluminium Version)

Note : Option shown in [ ] bracket are special, please consult Sales HQ / manufacturing.