

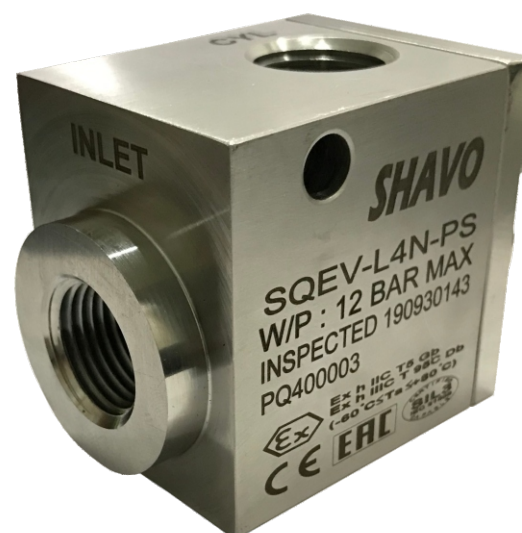
SQEV (1/4", 3/8", 1/2", 3/4", 1")

Features

- Shavo's Quick Exhaust Valve having simple, compact design and constructions that grants for reliability in operations.
- Enables air to be exhausted quickly from air reservoirs and cylinders allowing higher cylinder speed to be achieved.
- Specially designed for severe environments.
- Applications include marine environments, oil and gas production, chemicals and food processing, medical analysis, corrosive atmosphere etc.
- Can be used in every position, but for a prompt fluid discharge it is suggested to connect them as near as possible to the cylinder.
- CE, ATEX, EAC Ex (CUTR 12), EAC(CUTR 10) approved.
- SIL3 capable as per IEC 61508.

All External and internal parts are NACE MR 0175* approved.

(*National Association of Corrosion Engineers MR-0175 defines requirements for sulphide stress cracking resistant materials used in oilwells and corrosive environments).



PARAMETERS	SPECIFICATIONS		
Fluid / Operating Media	Compressed Air Inert Gases, Sweet (Natural) gas Gases - Filtered lubricated or non-lubricated Liquids - Low pressure hydraulic, mineral oil or water		
Pipe size/ Connections	1/4", 3/8", 1/2", 3/4", 1".		
Pipe Thread	NPT - Standard BSPT, BSP - Optional		
Max. Working Pressure	12 bar (174 psi)		
Material of Construction	SS 316L (NACE MR0175 compliance) SS 316		
Body, cover, bush			
Fastners			
Seals, disc (Elastomers)	Low temp. Nitrile (LNBR) - Std.		
Operating Temperature Range (ambient) For Elastomers	Low temperature Nitrile : -60°C to +80°C (Std)		
(Supply to outlet) Standard Nominal Flow rate at 6 (85 psi) supply pressure and 1 bar (14.5 psi) pressure drop (differential)	1/4" (high flow)	- 46 scfm (1290 slpm)	
	3/8" (high flow)	- 64 scfm (1810 slpm)	
	1/2" (high flow)	- 135 scfm (3810 slpm)	
	3/4" (high flow)	- 160 scfm (4520 slpm)	
	1" (high flow)	- 274 scfm (7700 slpm)	
	1/2" (std. flow)	- 90 scfm (2549 slpm)	
	1" (std. flow)	- 285 scfm (8069 slpm)	
(Outlet to Exhaust) Standard Nominal Flow rate at 6 (85 psi) supply pressure and 1 bar (14.5 psi) pressure drop (differential)	1/4" (high flow)	- 98 scfm (2780 slpm)	
	3/8" (high flow)	- 135 scfm (3810 slpm)	
	1/2" (high flow)	- 194 scfm (5490 slpm)	
	3/4" (high flow)	- 228 scfm (6460 slpm)	
	1" (high flow)	- 388 scfm (11000 slpm)	
	1/2" (std. flow)	- 150 scfm (4247 slpm)	
	1" (std. flow)	- 348 scfm (9840 slpm)	
CV Value	Size	Supply to Outlet	Outlet to Exhaust
	1/4" (high flow)	1.3	2.8
	3/8" (high flow)	1.8	3.8
	1/2" (high flow)	3.8	5.5
	3/4" (high flow)	4.5	6.5
	1" (high flow)	7.8	11.0
	1/2" (std. flow)	2.59	4.31
	1" (std. flow)	8.2	10.0
Weight	1/4" (high flow)	0.324 kg.	
	3/8" (high flow)	0.471 kg.	
	1/2" (high flow)	0.772 kg.	
	3/4" (high flow)	1.090 kgs.	
	1" (high flow)	3.553 kgs.	
	1/2" (std. flow)	0.586 kg.	
	1" (std. flow)	1.400 kgs.	

Note : 1) Fastners will not have NACE MR0175 compliance.

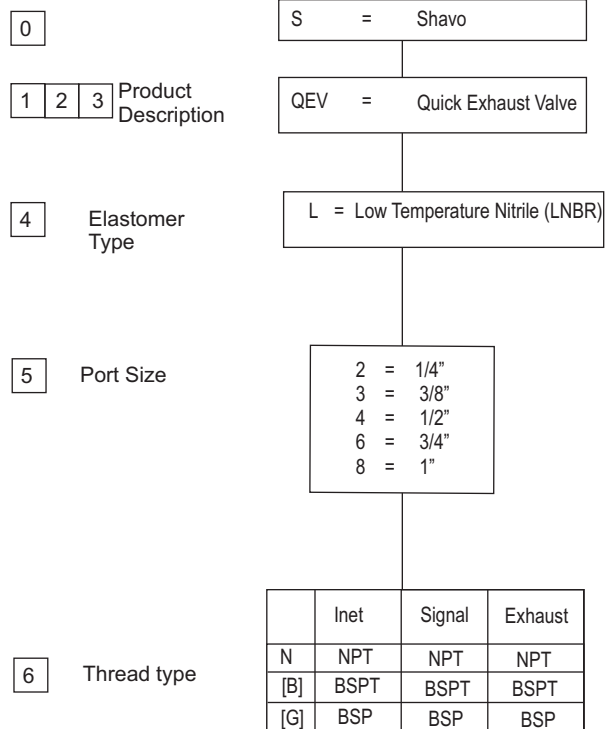
2) Internal 'wetted parts' will have NACE MR0175 compliance.

SQEV (1/4", 3/8", 1/2", 3/4", 1")

Option Selector

Sample Model Number → **S Q E V - L 2 N - X X X - S - X X X**

Position → **0 1 2 3 - 4 5 6 - 7 8 9 - 10 - 11 12 13**



SQEV (1/4", 3/8", 1/2", 3/4", 1")

7 8 9 Test / Approval

A	0	0	ATEX
A	0	1	UKEX
A	0	2	UKCA
A	0	3	ATEX, UKEX, EAC Ex, UKCA
A	0	4	ATEX, UKEX, EAC Ex
A	0	5	ATEX, UKEX, UKCA
A	0	6	ATEX, UKEX, EAC Ex
B	0	0	ATEX, CE
B	0	1	ATEX, CE, UKEX, EAC Ex, UKCA
B	0	2	ATEX, CE, UKEX, EAC Ex
B	0	3	ATEX, CE, UKEX, UKCA
B	0	4	ATEX, CE, UKCA, EAC Ex
B	0	5	ATEX, CE, EAC Ex
C	0	0	CE
C	0	1	CE, UKEX, EAC Ex, UKCA
C	0	2	CE, UKEX, EAC Ex
C	0	3	CE, UKEX, UKCA
C	0	4	CE, EAC Ex, UKCA
C	0	5	CE, EAC Ex
D	0	0	ATEX, EAC
D	0	1	ATEX, EAC, UKEX, EAC Ex, UKCA
D	0	2	ATEX, EAC, UKEX, EAC Ex
D	0	3	ATEX, EAC, UKEX, UKCA
D	0	4	ATEX, EAC, EAC Ex, UKCA
E	0	0	EAC
E	0	1	EAC, UKEX, EAC Ex, UKCA
E	0	2	EAC, UKEX, EAC Ex
E	0	3	EAC, UKEX, UKCA
E	0	4	EAC, EAC Ex, UKCA
F	0	0	ATEX, SIL3
F	0	1	ATEX, SIL3, UKEX, EAC Ex, UKCA
F	0	2	ATEX, SIL3, UKEX, EAC Ex
F	0	3	ATEX, SIL3, UKEX, UKCA
F	0	4	ATEX, SIL3, EAC Ex, UKCA
F	0	5	ATEX, SIL3, EAC Ex
G	0	0	CE, EAC
G	0	1	CE, EAC, UKEX, EAC Ex, UKCA
G	0	2	CE, EAC, UKEX, EAC Ex
G	0	3	CE, EAC, UKEX, UKCA
G	0	4	CE, EAC, EAC Ex, UKCA
H	0	0	CE, SIL3
H	0	1	CE, SIL3, UKEX, EAC Ex, UKCA
H	0	2	CE, SIL3, UKEX, EAC Ex
H	0	3	CE, SIL3, UKEX, UKCA
H	0	4	CE, SIL3, EAC Ex, UKCA
H	0	5	CE, SIL3, EAC Ex
J	0	0	EAC, SIL3
J	0	1	EAC, SIL3, UKEX, EAC Ex, UKCA
J	0	2	EAC, SIL3, UKEX, EAC Ex
J	0	3	EAC, SIL3, UKEX, UKCA
J	0	4	EAC, SIL3, EAC Ex, UKCA
K	0	0	CE, EAC, SIL3

SQEV (1/4", 3/8", 1/2", 3/4", 1")

K	0	1	CE, EAC, SIL3, UKEX, EAC Ex, UKCA
K	0	2	CE, EAC, SIL3, UKEX, UKCA
K	0	3	CE, EAC, SIL3, UKEX, EAC Ex
K	0	4	CE, EAC, SIL3, EAC Ex, UKCA
L	0	0	ATEX, EAC, SIL3
L	0	1	ATEX, EAC, SIL3, UKEX, EAC Ex, UKCA
L	0	2	ATEX, EAC, SIL3, UKEX, EAC Ex
L	0	3	ATEX, EAC, SIL3, UKEX, UKCA
L	0	4	ATEX, EAC, SIL3, EAC Ex, UKCA
M	0	0	ATEX, CE, SIL3
M	0	1	ATEX, CE, SIL3, UKEX, EAC Ex, UKCA
M	0	2	ATEX, CE, SIL3, UKEX, EAC Ex
M	0	3	ATEX, CE, SIL3, UKEX, UKCA
M	0	4	ATEX, CE, SIL3, EAC Ex, UKCA
N	0	0	ATEX, CE, EAC
N	0	1	ATEX, CE, EAC, UKEX, EAC Ex, UKCA
N	0	2	ATEX, CE, EAC, UKEX, EAC Ex
N	0	3	ATEX, CE, EAC, UKEX, UKCA
N	0	4	ATEX, CE, EAC, EAC Ex, UKCA
[O]	[0]	[0]	Other customer special requirement if Any
P	0	0	ATEX, CE, EAC, SIL3
P	0	1	ATEX, CE, EAC, SIL3, UKEX, EAC Ex, UKCA
P	0	2	ATEX, CE, EAC, SIL3, UKEX, EAC Ex
P	0	3	ATEX, CE, EAC, SIL3, UKEX, UKCA
P	0	4	ATEX, CE, EAC, SIL3, EAC Ex, UKCA
Q	0	0	ATEX, EAC Ex
R	0	0	EAC Ex
R	0	1	EAC Ex, UKEX, UKCA
R	0	2	EAC Ex, UKCA
S	0	0	SIL3
S	0	1	SIL3, UKEX, EAC Ex, UKCA
S	0	2	SIL3, UKEX, EAC Ex
S	0	3	SIL3, UKEX, UKCA
S	0	4	SIL3, EAC Ex, UKCA
V	0	0	ATEX, CE, SIL3, EAC Ex
V	0	1	ATEX, CE, SIL3, EAC Ex, UKEX, UKCA
V	0	2	ATEX, CE, SIL3, EAC Ex, UKEX
V	0	3	ATEX, CE, SIL3, EAC Ex, UKCA
X	X	X	STANDARD UNITS WITHOUT ANY CERTIFICATE / APPROVAL
Y	0	0	ATEX, SIL3, EACEx
Y	0	1	ATEX, SIL3, EACEx, UKEX, UKCA
Y	0	2	ATEX, SIL3, EAC Ex, UKEX
Y	0	3	ATEX, SIL3, EACEx, UKCA
Z	0	1	CE, SIL3, EAC Ex, UKEX, UKCA
Z	0	2	CE, SIL3, EAC Ex, UKEX
Z	0	3	CE, SIL3, EAC Ex, UKCA

SQEV (1/4", 3/8", 1/2", 3/4", 1")

10 Material of Construction/
Flow capacity

S = SS316L standard flow version
H = SS316L High flow version

11 12 13 Compliance

X	X	X	Standard Unit Without any Complianace
A	0	1	RoHS 3 Compliance
A	0	2	REACH Compliance
A	0	3	Copper Free (Only Applicable Aluminium Version)
A	0	4	RoHS3, REACH Compliance
A	0	5	RoHS3, REACH, Copper Free (Only Applicable for Aluminium Version)
A	0	6	RoHS3, Copper Free (Only Applicable for Aluminium Version)
A	0	7	REACH, Copper Free (Only Applicable for Aluminium Version)

Note : Option shown in the [] bracket are special, Please contact Sales HQ/Manufacturing.